

# PREP

Primary resource efficiency by enhanced prediction

*Professors* Pertti Lamberg , Jan Rosenkranz

*Senior researcher* Cecilia Lund

*PhD students* Viktor Lishchuk and Pierre-Henri Koch

## Partners

LTU



Chalmers



lundin mining

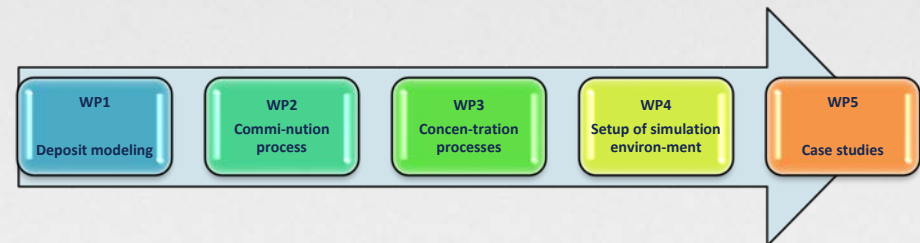
Outotec

## Time plan

15.6 MSEK

Q4 2014 – Q2 2018

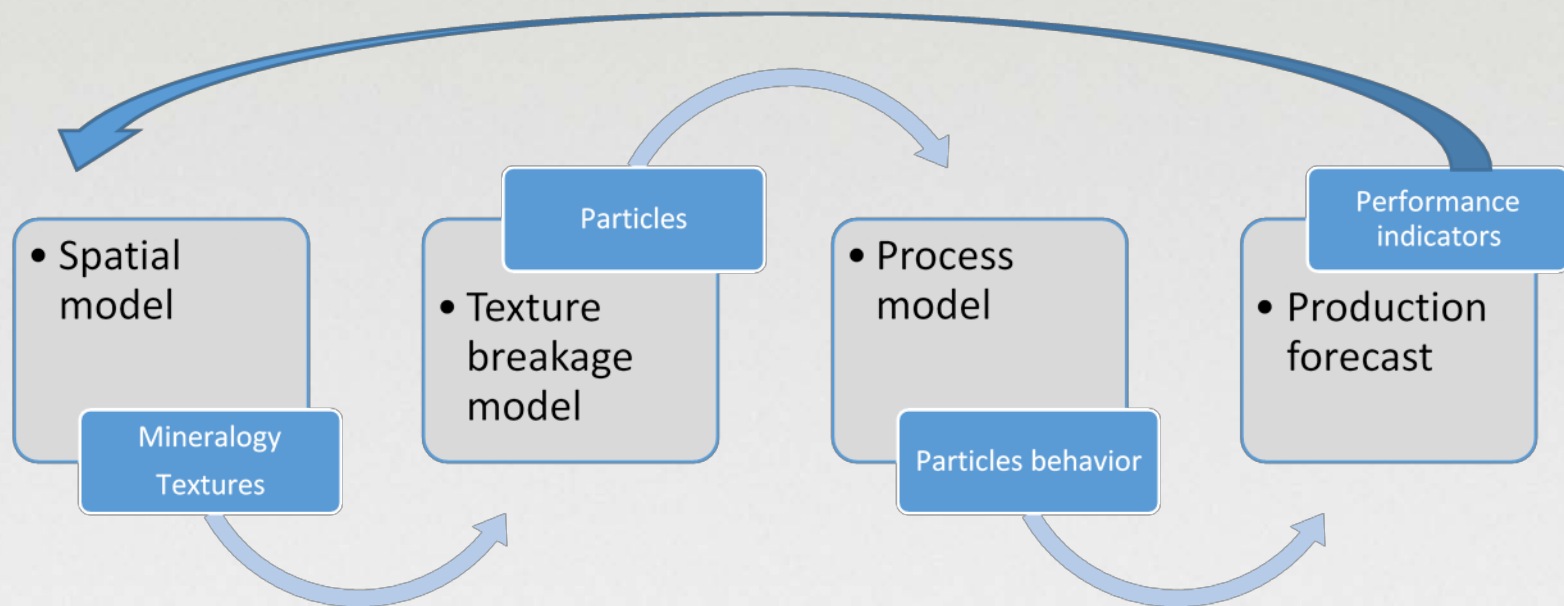
Last WP 5 started in Jan 2017



SIP | STRIM

# Resource effective mineral processing

**Aims;** at the development of an integrated modeling and simulation environment for conducting such a comprehensive model-based prognosis for the beneficiation of primary mineral resources

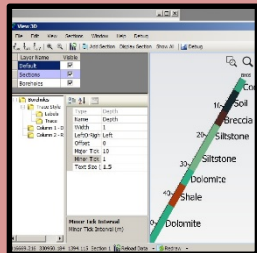


# Geometallurgical program

Case studies; Leveäniemi deposit  
Aitik deposit  
Zinkgruvan deposit

## Geometallurgical mapping

Geological data



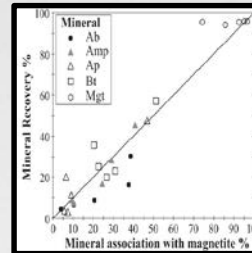
Sampling



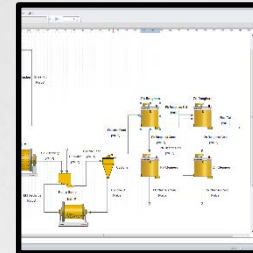
Test work



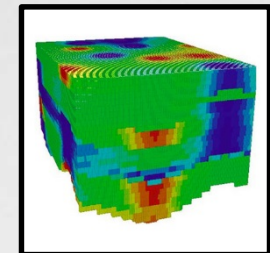
Process model



Simulation



Geometallurgical model



# Further work

- Final usage of a geometallurgical program is the implementation
- Decision needs to be made by each company, using their own financial data to develop the economic model

